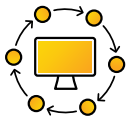


SOFTWARE DEVELOPMENT

SQL MAINTENANCE & SUPPORT

In order to keep your SQL environment secure, performant, and up to speed with best practices, frequent upkeep and maintenance is necessary. The SQL experts at Atomic Data will take a holistic approach to helping you manage your entire environment.



Environment Analysis

Because SQL co-exists with many other applications in an environment, we'll analyze to ensure that things like Windows patching or heavy application use are taken into account when making recommendations regarding your environment.



Security

We'll review the security of each SQL instance, making recommendations on how to ensure your server is secure and observing best practices.



Failover

If you utilize Failover Clustering, Always on Availability, or Database Monitoring, we'll review and recommend any changes to ensure your data is available as often as possible.



Job Analysis

We'll analyze the jobs currently running on each SQL Server, identifying any job failures for the past month, missing jobs, and areas for improvement and then make recommendations for changes as needed in a monthly summary.



Drive Health

Because databases and backups can rapidly expand, we'll review the size of each database, log, and backup drive month over month to ensure that expansion is happening at a healthy rate. This will also help identify any issues that may be occurring with backup job frequency.



SQL Versions

We'll review the current version of each SQL database instance and compare it against the most recent release. Updates will be recommended and scheduled based on update contents and your individual needs.



Index Health

Index Health greatly impacts performance on any SQL database of significant size. We'll review the health of current indexes and make recommendations to improve them — from jobs to index adjustments.