

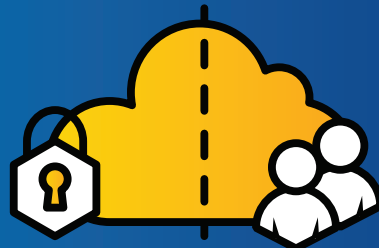
OVERVIEW

ATOMIC CLOUD® SOLUTIONS

When it comes to cloud, one size does not fit all. Your private, hybrid, multi, or public cloud strategy depends on dozens of factors, each unique to your organization. Use this document to help you breakdown the Atomic Data cloud offerings and decide what's best for you.

PRIVATE CLOUD

Dedicated single-tenant environment with virtualized or physical servers in an Atomic Data facility. Built on our own mix of hardware and software from VMware & Dell.







HYBRID CLOUD

A combination of and connection between private Azure Stack and public Azure cloud resources. Built on the Cisco Integrated System for Azure Stack Hub, a pre-built hardware and software appliance.

THE ATOMIC CLOUD VARIANTS

- Powered by Cloud Director:** A software-defined private cloud built entirely on VMware's cloud technology platform, including vSphere, Cloud Director, NSX, and others. Provides clients with potentially reduced storage costs, hourly utilization billing, and self-management capabilities.
- Powered by Azure® Stack Hub:** An on-premise extension of Azure's public cloud environment, offering more control and consistency between private and public workloads for application development. Generally intended for those businesses with existing or future public Azure resources, or those looking for Azure public benefits/services in an on-premise environment.

	PRIVATE I	HYBRID I
	Powered by Cloud Director	Powered by Azure Stack Hub
Primary Vendors	 	 
Underlying Technologies	Dell RackMount vSAN Ready Nodes, VMware vSphere, ESX, NSX, vSAN, Cloud Director	Cisco Integrated Systems for Azure Stack Hub
Key Differentiator	Self management	Consistency with Azure public
Example Use Case	Small, medium, or large enterprise with fluctuating client-server workloads and some in-house expertise	SMB to large enterprise with existing or future cloud applications in Azure public
Atomic Data Support		✓
Billing Method	Utilization based, by the hour	Utilization based, by the hour
Infrastructure as a Service		✓
Platform as a Service	✗	✓
Self Management Portal	✓	✓
Block Storage	✗	✗
NetApp Replication Services	✗	✗
Backup Services	Veeam w/ self-service	CommVault
Tape Backup	✓	✗
Encryption at Rest	✗	✓
Load Balancing	Avi-based L4 & L7	Azure-based L4
Context Firewall & IPS	✓	✗
Compliance	SOC 2 Type II attested, PCI-DSS ready	SOC 2 Type II attested, PCI-DSS & CSA validated ¹

¹Not a certification as these standards include several personnel and process-related controls.